

# WELCOME TO THE ROGUE RIVER CLEANUP!!

## Trash Pick-up & Invasive Weed Removal (10 AM – 12 PM)

**\*\*All access areas and garbage drop-off locations are signed\*\***

### Beaches – Rogue River mouth, South & North Jetties

- ★ ➤ **South Beach** - Register at the Gold Beach Visitor Center (94080 Shirley Ln, Gold Beach, OR 97444) to sign up for the day's events! Sign volunteer waivers, collect gear, and get ready to clean up. You can also sign waivers ahead of time on the form below. Walk South or North from this location to clean up. Remove trash from beach and place in dumpster at the Visitor Center. **\*\*There are restrooms available at this location.**
- **Rogue River mouth & South Jetty** – Start at the south jetty, on Airport Rd, where you will reach several access points to the beach. Feel free to go North or South. After all, once the river spits it out, this is where it ends up! Remove trash from beach and place in designated area for disposal by Port. This area will be signed and easy to see!
- **North Jetty** – Travel North across the Lee Patterson Bridge, and make an immediate LEFT on Wedderburn Loop Rd. Travel approximately 0.7 mi and make a left down to the beach. Go North from here and remove garbage that you find. Please bring back to South Jetty designated area for garbage. This area will be signed and easy to see!

### South side of the Rogue – Jerry' Flat Road

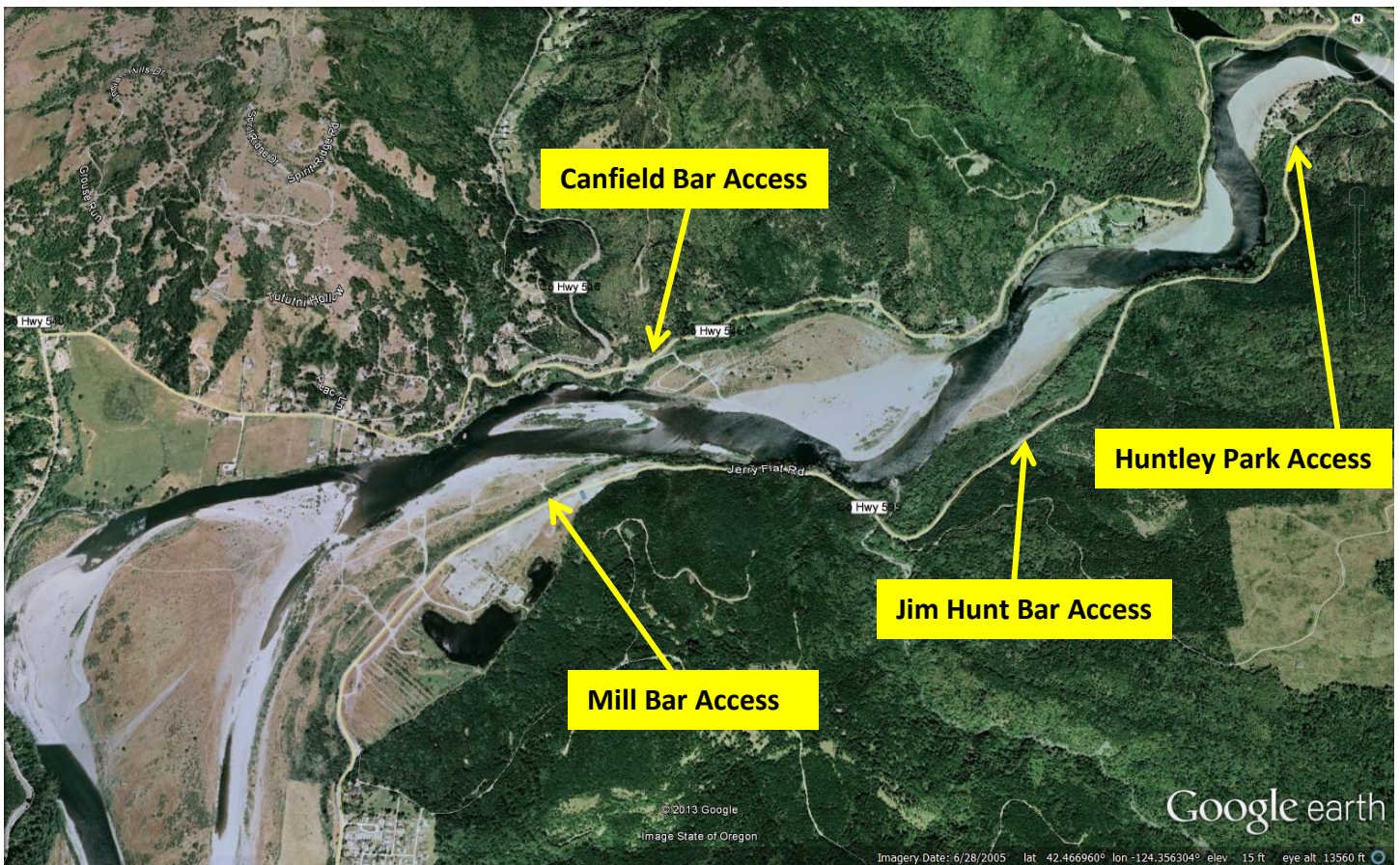
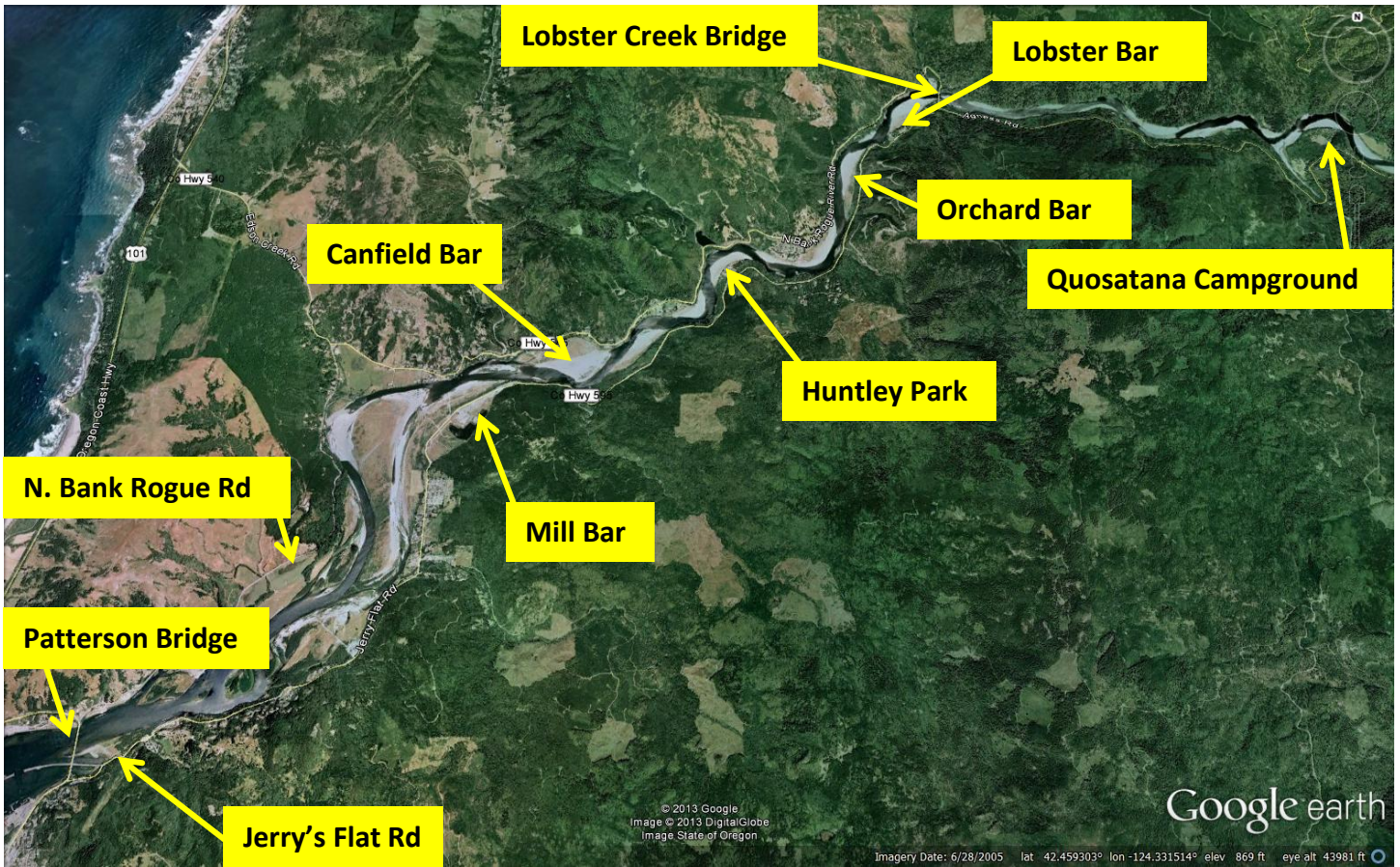
- **Huntley Park** – Take Jerry's Flat Rd. approximately 7 miles upstream and TURN LEFT into Huntley Park. This property is also owned by the Port of Gold Beach and they have approved the use of their on-site dumpster for trash disposal on this day ONLY. This is a wide gravel bar, so feel free to spread out! **\*\*There are restroom facilities on site here as well.**
- **Orchard Bar** - Take Jerry's Flat Rd. approximately 9 miles upstream and TURN LEFT into this Port-owned property. This property is also owned by the Port of Gold Beach and they have approved the use of their on-site dumpster for trash disposal on this day ONLY. This is a wide gravel bar, so feel free to spread out! Remove trash from bar and bring back to Huntley Park for disposal.
- **Mill Bar** – Take Jerry's Flat approximately 4.5 miles upstream and TURN LEFT into this Private/Port property. Feel free to spread out and pick up trash, and bring to Quosatana Campground for disposal.

### North side of the Rogue River – North Bank Rogue River Road

- **Canfield Bar** – Drive north over Patterson bridge and make a RIGHT onto N. Bank Rogue River Rd. Continue to the intersection with Edson Creek Rd (about 4.5 miles - there is a little market here on the corner), and make a RIGHT onto N. Bank Rd. Continue on N. Bank Rd for another 1.5 miles. Just past the Cedar Valley turnoff (0.3 mi.), TURN RIGHT and go down to the bar. Plenty of room to explore for trash on this bar! Remove trash from bar and bring to Quosatana Campground for disposal.

### Gold Beach – Buffington Park

- **Buffington Park** - Join *One Bag at a Time* at Dean Creek to help remove weeds and pick up trash. This park is an important cornerstone of our community! This is a great option if you are short on time or want to be warm! (94255 Caughell Street).







### **Celebration and BBQ (12 – 2 PM)**

- **Quosatana Campground (USFS site)** – Take Jerry’s Flat Road about 15.5 miles upriver, where you will make a LEFT into the campground. Follow the road down, and make a right at the stop sign to proceed to the day use area for BBQ and activities. The dumpster is located on the right, just past the fish cleaning station for trash drop-off. \*If you are coming from the N. Bank Rd., continue upriver from Canfield, cross Lobster Creek Bridge and turn left to get to the campground (about 4 miles from the bridge).
  - **PARKING**: There is a parking lot near the boat ramp (on the right), and there is also day-use parking on the left to park your car for the BBQ.
  - **TRASH DROP-OFF**: The garbage is located on the right, just past the fish cleaning station. Place tires on the outside of the garbage, and other garbage inside the bin.

# **THANK YOU FOR YOUR HELP!!**

*This event is hosted by the Curry Soil & Water Conservation District*