

2024 Noxious Weed Sites Inventory



Common weed name	Total Sites Visited	Sites New	Sites Gone	Sites Treated	Gross Acres	Net Acres	Treated Net Acres
Armenian Blackberry	11	2	0	11	111.509	43.082	35.509
Blessed Milk Thistle	3	1	0	3	2.284	0.387	0.387
Cape Ivy	18	1	6	12	0.449	0.054	0.054
English Ivy	10	2	0	10	10.157	5.787	3.157
European Beachgrass	3	1	0	3	94.365	42.598	40.167
French Broom	3	1	0	3	2.327	0.547	0.547
Gorse	429	84	116	312	3425.183	1706.655	1062.734
Himalayan Knotweed	8	0	7	0	0	0	one small plant not treated
Japanese Knotweed	107	13	46	61	1.427	0.334	0.334
Jubatagrass	106	16	62	43	197.085	11.311	11.268
Pine Echium	1	1	0	1	0.001	0	0
Reed Canarygrass	5	2	0	5	13.802	8.526	8.126
Scotch Broom	4	0	0	4	31.965	4.636	4.636
Spanish Heath	24	1	4	20	52.282	5.142	5.142
Yellow Starthistle	1	0	1	0	0	0	1 plant
Totals	733	125	242	488	3942.836	1829.059	1172.061

Total sites visited may include repeated visits to the same location, but most are once a year

Sites Gone' is a site that had no sprouts or regrowth at time of visit. We continue to monitor and treat depending on the species.

Sites Treated includes multiple treatments at some sites.

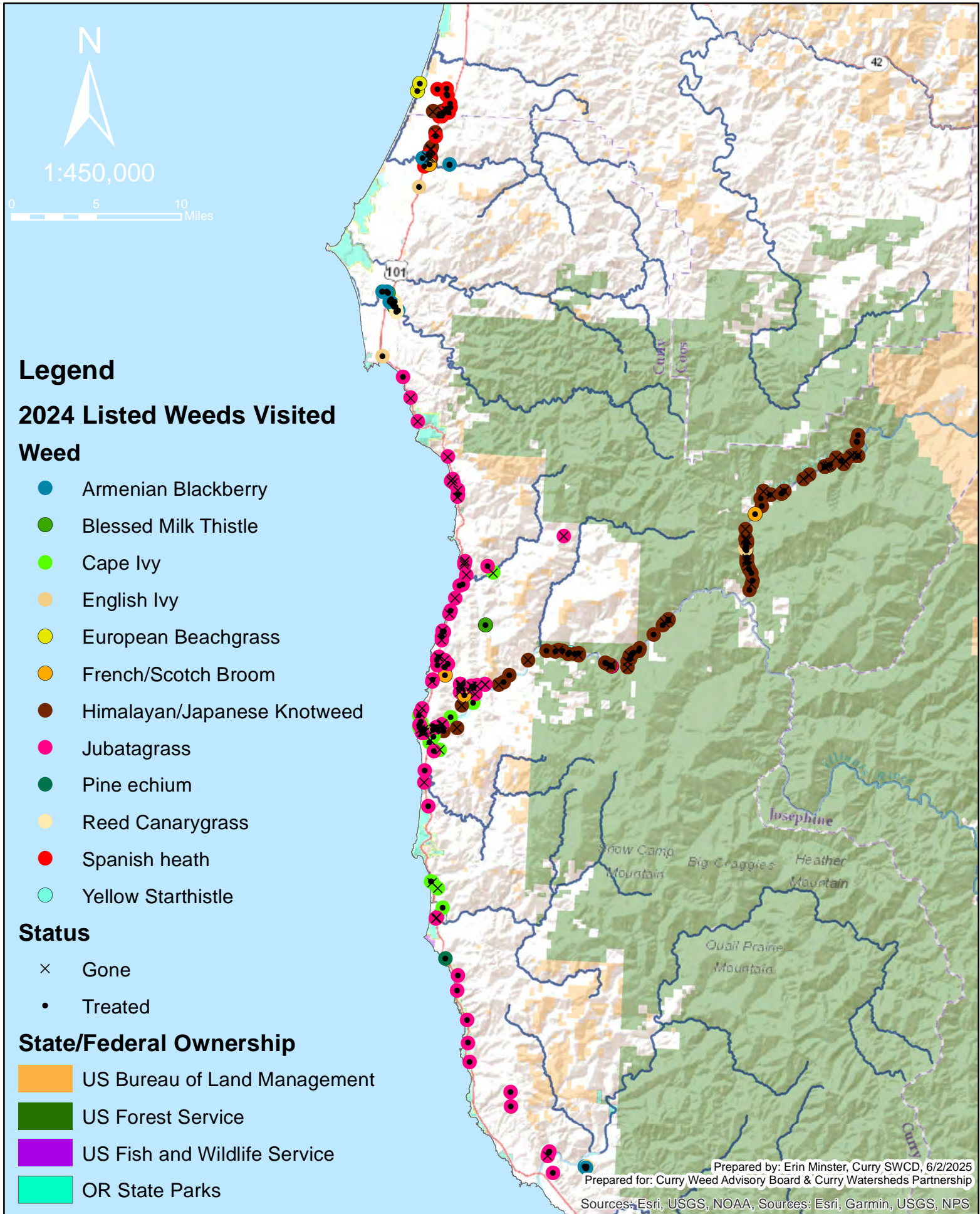
10ft x 10ft is equal to 0.002 acres or 5ft x 20ft.

Gross Acres is the size of a pretend rectangle around the margins of the site, a way to delineated the "site".

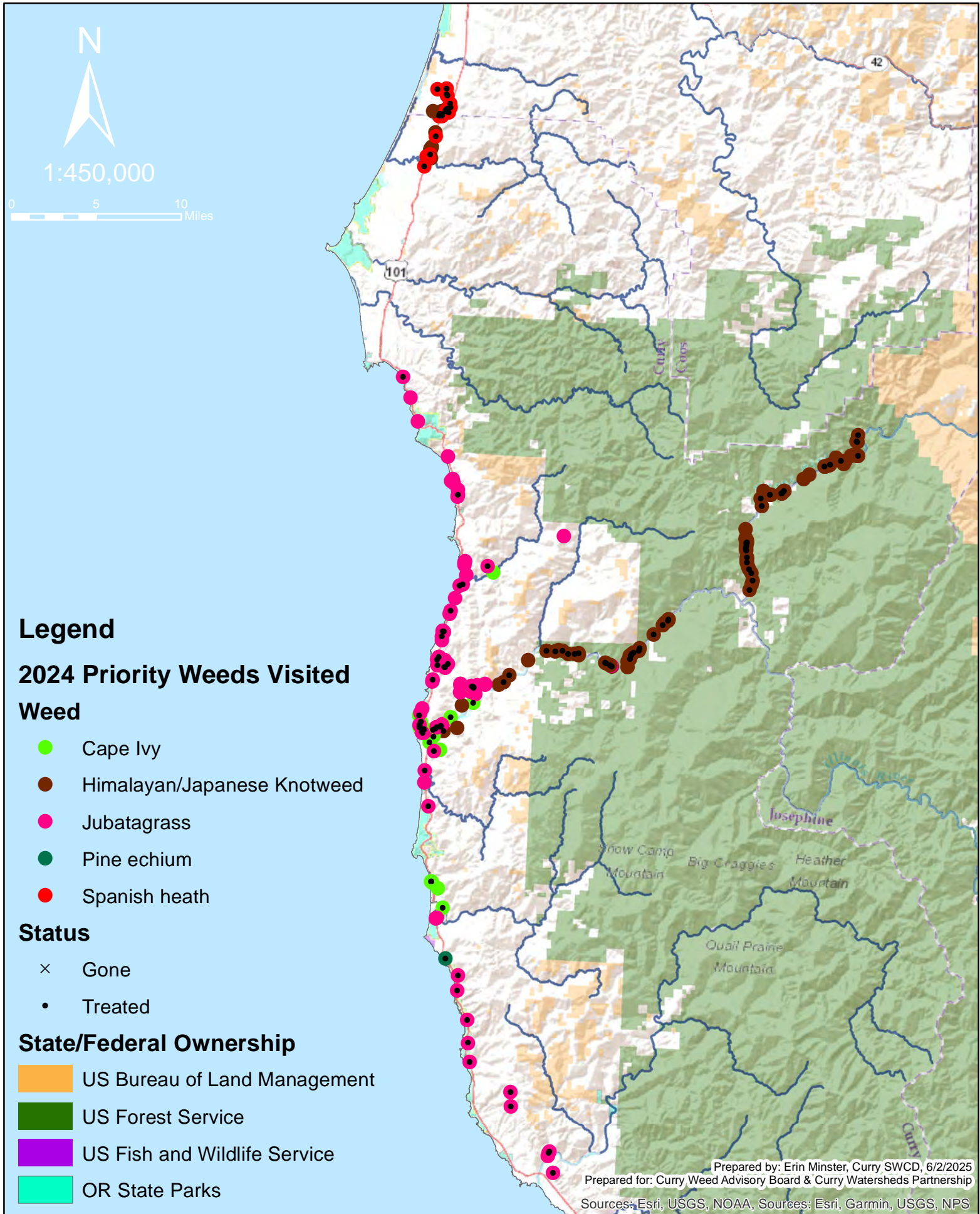
Net Acres is gross acres times the percent cover for a species. In other words how much of the above 'rectangle' is covered by the weed, 10x10 at 50% cover is 0.001 acres.

Treated Acres is net acres times the percent of the patch treated, most are 100%. Some sites are only a few plants and are not reflected in the treated acres.

2024 Noxious Weed Sites Inventory



2024 Noxious Weed Sites Inventory



2024 Noxious Weed Sites Inventory

