

# 2023 Noxious Weed Sites Inventory



Common weed name	Total Sites Visited	Sites New	Sites Gone	Sites Treated	Gross Acres	Net Acres	Treated Net Acres
Armenian Blackberry	14	6	0	14	117.791	53.465	44.915
Blessed Milk Thistle	2	1	0	2	1.952	0.357	0.35
Cape Ivy	17	1	7	10	6.068	0.323	0.322
English Ivy	10	4	0	9	25.789	8.962	6.306
European Beachgrass	2	1	0	2	68.653	41.18	14.111
False Brome	1	1	0	1	0.115	0.057	0.057
French Broom	1	1	0	1	0.344	0.138	0.138
Gorse	419	54	131	292	2360.443	971.119	500.726
Himalayan Knotweed	8	0	5	3	0.034	0.022	0.022
Japanese Knotweed	74	18	26	48	1.45	0.967	0.939
Jubatagrass	133	20	65	70	151.995	8.374	8.354
Oxeye Daisy	1	0	0	1	2.41	0.241	0.241
Reed Canarygrass	2	1	0	2	6.955	5.619	1.931
Scotch Broom	6	2	1	5	6.337	1.991	1.192
Spanish heath	23	1	6	17	44.805	5.546	5.546
Yellow bush lupine	1	1	0	1	741.048	222.312	37.052
Totals	714	112	241	478	3536.189	1320.673	622.202

Total sites visited may include repeated visits to the same location, but most are once a year

Sites Gone' is a site that had no sprouts or regrowth at time of visit. We continue to monitor and treat depending on the species.

Sites Treated includes multiple treatments at some sites.

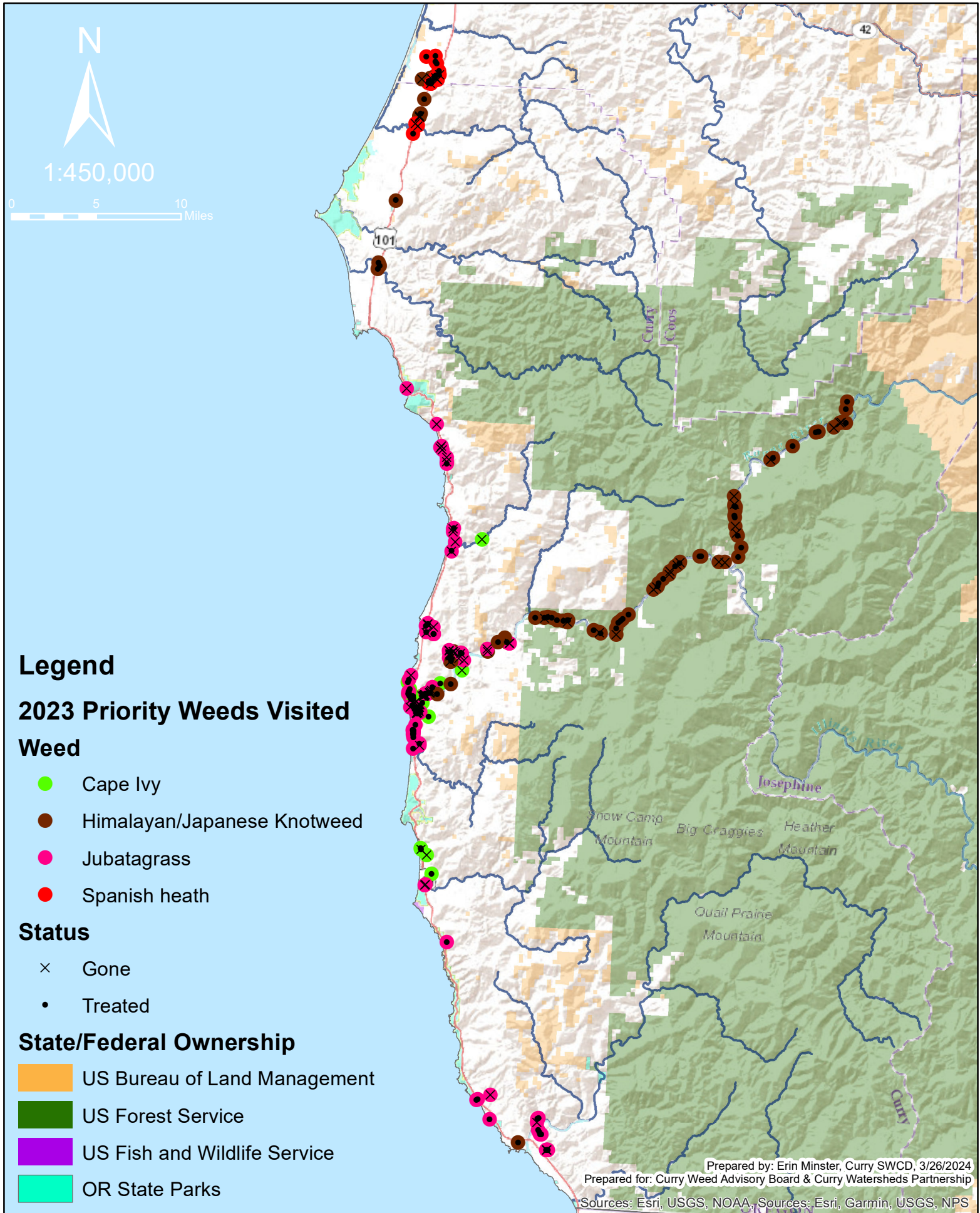
10ft x 10ft is equal to 0.002 acres or 5ft x 20ft.

Gross Acres is the size of a pretend rectangle around the margins of the site, a way to delineated the "site".

Net Acres is gross acres times the percent cover for a species. In other words how much of the above 'rectangle' is covered by the weed, 10x10 at 50% cover is 0.001 acres.

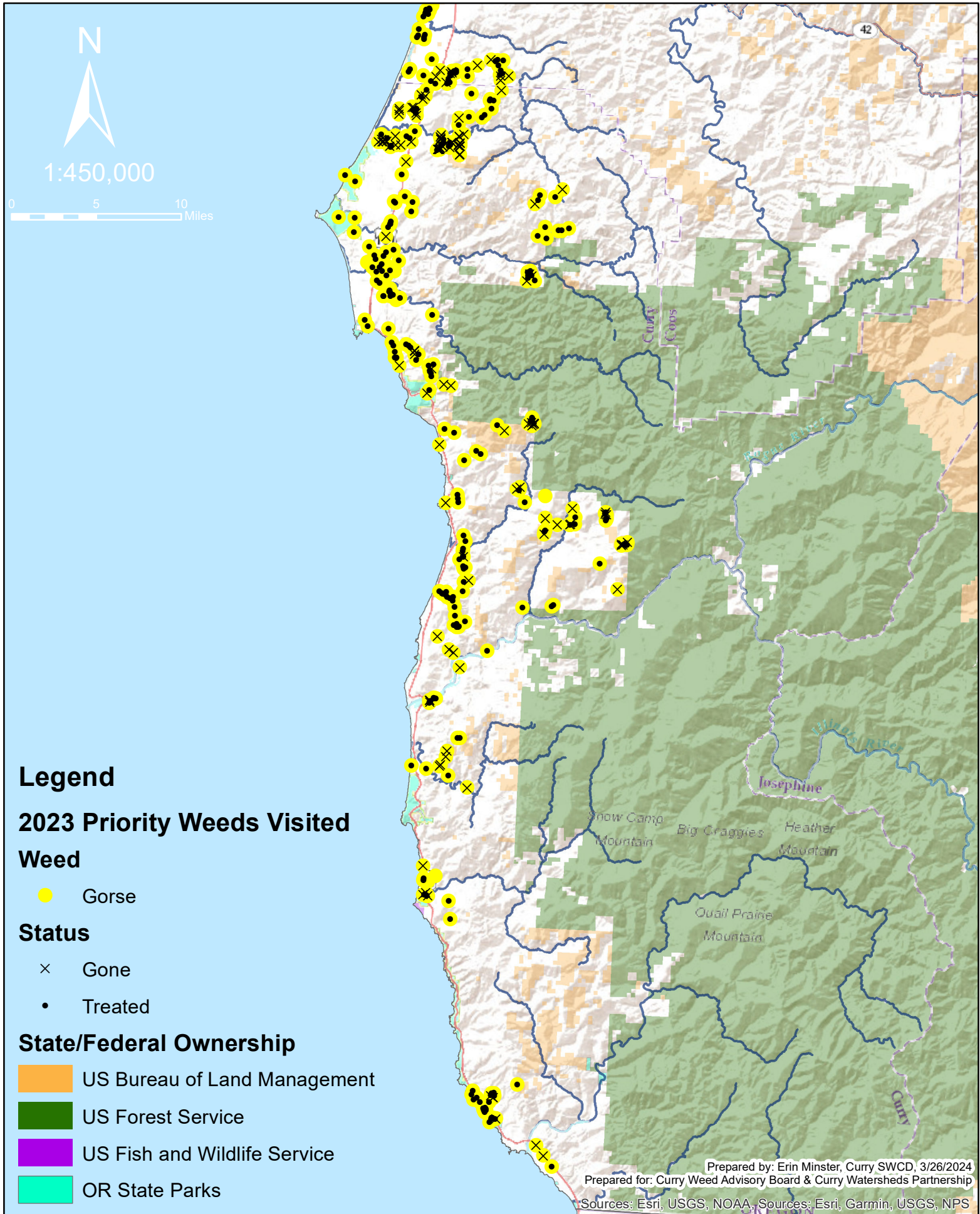
Treated Acres is net acres times the percent of the patch treated, most are 100%. Some sites are only a few plants and are not reflected in the treated acres.

# 2023 Noxious Weed Sites Inventory





# 2023 Noxious Weed Sites Inventory





**Legend**

**2023 Listed Weeds Visited**

**Weed**

- Armenian Blackberry
- Blessed Milk Thistle
- Cape Ivy
- English Ivy
- European Beachgrass
- False Brome
- French/Scotch Broom
- Himalayan/Japanese Knotweed
- Jubatagrass
- Reed Canarygrass
- Spanish heath
- Yellow bush lupine

**Status**

- × Gone
- Treated

**State/Federal Ownership**

- US Bureau of Land Management
- US Forest Service
- US Fish and Wildlife Service
- OR State Parks

Prepared by: Erin Minster, Curry SWCD, 3/26/2024  
 Prepared for: Curry Weed Advisory Board & Curry Watersheds Partnership  
 Sources: Esri, USGS, NOAA, Sources: Esri, Garmin, USGS, NPS

Prepared by: Erin Minster, Curry SWCD, 3/26/2024  
Prepared for: Curry Weed Advisory Board & Curry Watersheds Partnership  
Sources: Esri, USGS, NOAA, Sources: Esri, Garmin, USGS, NPS