

2022 Noxious Weed Sites Inventory



Common weed name	Total Sites Visited	Sites New	Sites Gone	Sites Treated	Gross Acres	Net Acres	Treated Net Acres
Armenian Blackberry	7	1	0	7	78.21	39.77	36.604
Blessed Milk Thistle	1	1	0	1	0.575	0.173	0.138
Cape Ivy	16	1	4	12	6.259	0.32	0.32
English Ivy	3	2	0	3	52.457	24.353	23.853
European Beachgrass	2	0	0	2	82.339	31.734	23.782
Gorse	213	24	61	150	732.948	282.92	273.901
Himalayan Knotweed	6	0	6	0	0	0	0
Japanese Knotweed	15	1	14	1	1.722	0.086	0.086
Jubatagrass	30	7	16	14	23.034	2.468	2.468
Oxeye Daisy	1	0	0	1	2.41	0.482	0.482
Pine Echium	17	17	5	13	0.146	0.037	0.001
Reed Canarygrass	2	1	0	2	7.057	3.416	3.301
Scotch Broom	2	2	0	2	25.86	5.193	5.193
Spanish heath	18		10	0	1.685	0.127	0.127
Totals	333	57	116	208	1014.702	391.079	370.256

Sites Gone' is a site that had no sprouts or regrowth at time of visit. We continue to monitor and treat depending on the species.

Sites Treated includes multiple treatments at some sites.

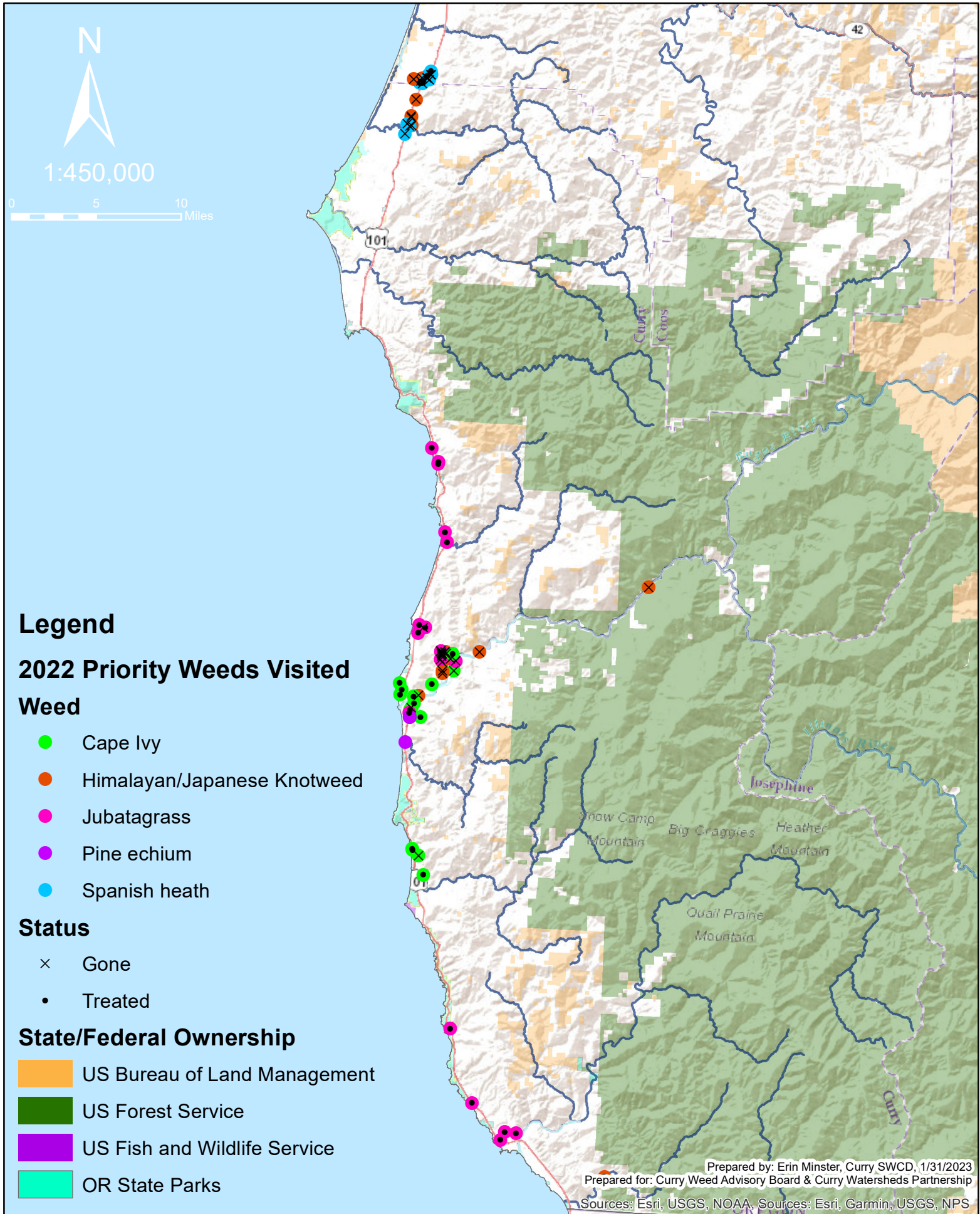
10ft x 10ft is equal to 0.002 acres or 5ft x 20ft.

Gross Acres is the size of a pretend rectangle around the margins of the site, a way to delineated the "site".

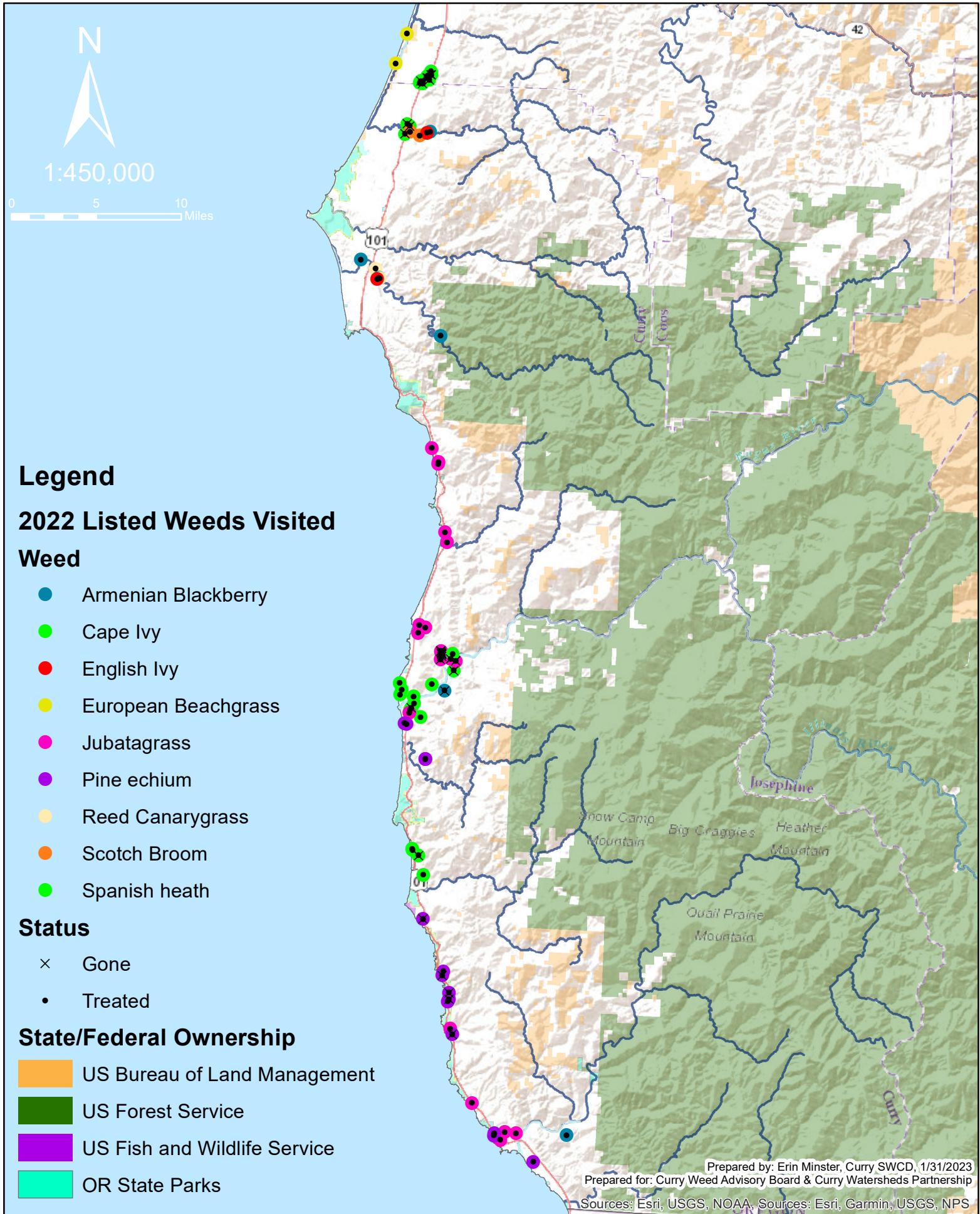
Net Acres is gross acres times the percent cover for a species. In other words how much of the above 'rectangle' is covered by the weed, 10x10 at 50% cover is 0.001 acres.

Treated Acres is net acres times the percent of the patch treated, most are 100%. Some sites are only a few plants and are not reflected in the treated acres.

2022 Noxious Weed Sites Inventory



2022 Noxious Weed Sites Inventory



2022 Noxious Weed Sites Inventory

