

2021 Noxious Weed Sites Inventory



Common weed name	Total Sites Visited	Sites New	Sites Gone	Sites Treated	Gross Acres	Net Acres	Treated Net Acres
Armenian Blackberry	1	1	0	1	1.033	0.775	0.775
English Ivy	9	9	0	2	0.562	0.359	0.114
Gorse	294	122	84	272	2377.821	825.674	271.064
Japanese Knotweed	46	7	15	31	1.978	0.558	0.558
Jubatagrass	72	16	17	55	142.775	9.094	9.047
Reed Canarygrass	1	1	0	1	1.148	0.574	0.115
Scotch Broom	1	11	0	7	9.183	0.918	0.918
Spanish heath	7	0	0	1	41.989	3.262	3.262
Totals	431	167	116	370	2576.489	841.214	285.853

Sites Gone' is a site that had no sprouts or regrowth at time of visit. We continue to monitor and treat depending on the species.

Sites Treated includes multiple treatments at some sites.

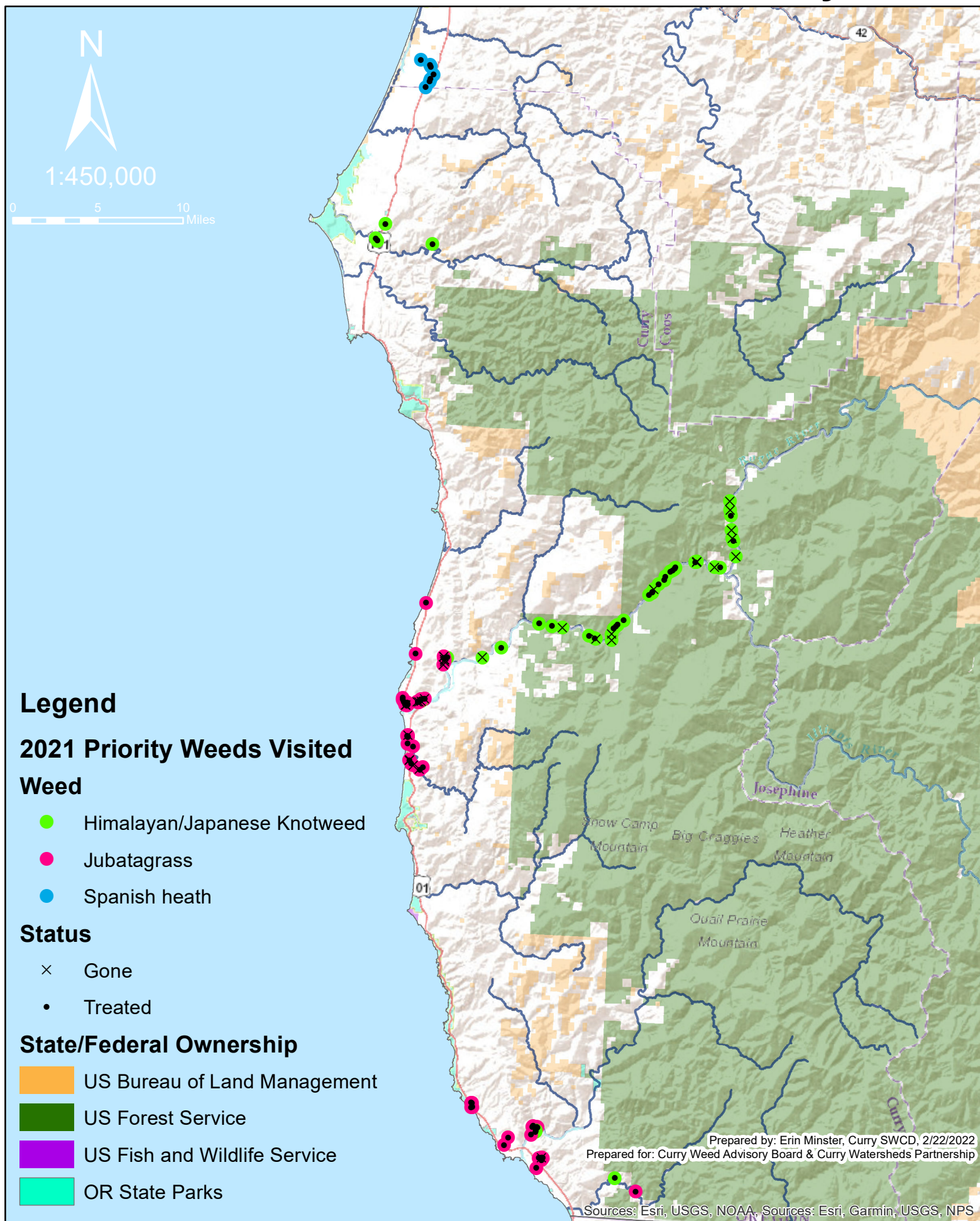
10ft x 10ft is equal to 0.002 acres or 5ft x 20ft.

Gross Acres is the size of a pretend rectangle around the margins of the site, a way to delineated the "site".

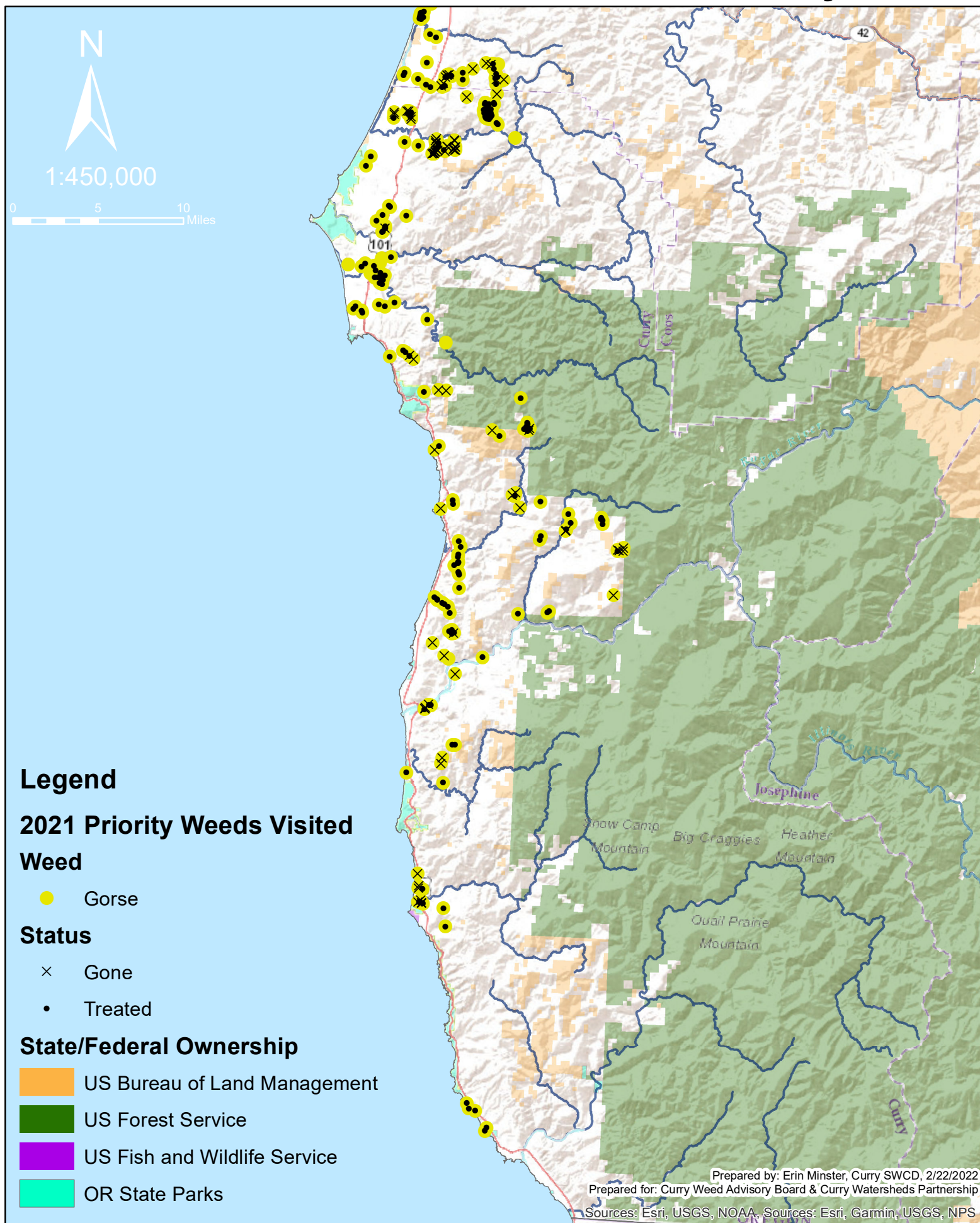
Net Acres is gross acres times the percent cover for a species. In other words how much of the above 'rectangle' is covered by the weed, 10x10 at 50% cover is 0.001 acres.

Treated Acres is net acres times the percent of the patch treated, most are 100%. Some sites are only a few plants and are not reflected in the treated acres.

2021 Noxious Weed Sites Inventory



2021 Noxious Weed Sites Inventory



2021 Noxious Weed Sites Inventory

