



CURRY WATERSHEDS
PARTNERSHIP

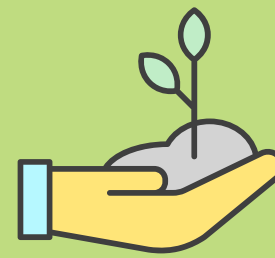
YOUTH EDUCATION PROGRAM

Presented by Statia Ryder and Cathy Boden,
Youth Education & Outreach Team

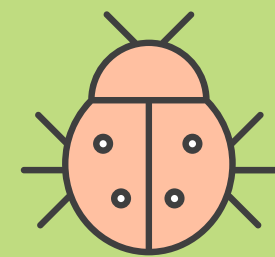




WHAT WE DO



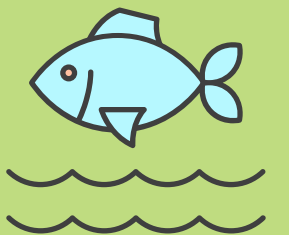
WE WORK CLOSELY WITH TEACHERS, STUDENTS, COMMUNITY PARTNERS AND THE ENVIRONMENT.



WE PROVIDE SCIENCE-BASED LEARNING EXPERIENCES FOR STUDENTS IN CLASS AND OUTSIDE IN SCHOOL GARDENS AND STEWARDSHIP PROJECTS.



WE LEAD FIELD TRIPS THAT TEACH STUDENTS NATURAL PROCESSES WHILE ALSO MAKING MEANINGFUL CONNECTIONS TO THEIR COMMUNITY. WE VISIT FORESTS, STREAMS, FARMS, AND FISHING PORTS.



Core To Field Science

Explore

Observe

Ask Questions

Make Connections

Discover Science Mysteries

Make Explanations Based
on Evidence

Applying and Communicating

Share findings with others

Argue & critique ideas

Solve practical problems

Make & use models & diagrams

Investigating

Plan investigations

Collect data & make measurements

Analyze & interpret data

Use field guides & other resources

Highlights of Accomplishments since the Education Program began in 2004



700+ STUDENTS
REACHED IN
SCHOOLS EACH
YEAR

Agricultural Field trips,
Salmon Ecology unit,
Foodshed lessons,
Natural Resource Days,
Food Education,
Stream Trailer education,
Stewardship projects,
Outdoor School & more!!

OVER 10,000
NATIVE PLANTS
PLANTED COUNTY-
WIDE

Winchuck River, Jack Creek,
Riley Creek, Lower Rogue,
Myrtle Creek, Brush Creek,
Garrison Lake, Sixes estuary,
Willow Creek,
and New River watersheds

SCHOOL GARDENS
AND/OR
POLLINATOR
GARDENS IN EACH
SCHOOL

Our Program staff are
instrumental in supporting
school gardens,
monarch waystations, &
maintaining greenhouses.

QUALITY,
REPUTABLE
PROGRAM

Statia Ryder and
Cathy Boden are well
respected and valued
education partners for
Curry youth.

We also offer after-school enrichment activities,
such as :

Cooking club, 4H Science/STEM club, 4H camps,
Farm to School Dinner



WE PROVIDE A "REAL WORLD
CONTEXT" THAT SCHOOLS
APPRECIATE

EXPERIENTIAL LEARNING GIVES YOUTH THE
OPPORTUNITY TO SEE AND LEARN ABOUT PARTS OF
THEIR COMMUNITY THAT THEY MAY NOT HAVE ACCESS
TO OTHERWISE

WE PROVIDE A "REAL WORLD
CONTEXT" THAT SCHOOLS
APPRECIATE

EXPERIENTIAL LEARNING GIVES YOUTH THE
OPPORTUNITY TO SEE AND LEARN ABOUT PARTS OF
THEIR COMMUNITY THAT THEY MAY NOT HAVE ACCESS
TO OTHERWISE



The Vision:

THOSE WE SERVE ARE EQUIPPED
TO EFFECTIVELY RECOGNIZE AND
PARTICIPATE IN DECISIONS
THAT IMPACT
DYNAMIC RELATIONSHIPS
CONNECTING ECOSYSTEM,
COMMUNITY AND
INDIVIDUAL HEALTH.



Our mission:
PROVIDE HANDS-ON
YOUTH EDUCATION IN
OUTDOOR SETTINGS,
PROMOTING
CURIOSITY,
CRITICAL THINKING,
AND COMMUNITY
CONNECTIONS



STRATEGIC GOALS 2020-23



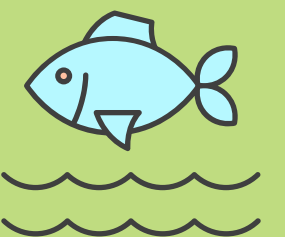
GOAL 1: SUPPORT SCHOOL ACHIEVEMENT OF STATE AND NATIONAL EDUCATIONAL GOALS RELEVANT TO CURRY WATERSHEDS PARTNERSHIP MISSION.



GOAL 2: STRUCTURE EDUCATION PROGRAM TO ENHANCE CUMULATIVE LEARNING AND ENCOURAGE BROAD SKILL DEVELOPMENT.



GOAL 3: ESTABLISH FOUNDATION FOR PROGRAM SUSTAINABILITY AND GROWTH.



HOW WE ARE IMPROVING OUR STRATEGY



COLLABORATIVE WORK WITH TEACHERS

Foster an integrated and collaborative approach within School Districts to align with Next Generation Science Standards that are well defined.

BUILD PARTNERSHIPS WITH AGRICULTURAL LANDOWNERS

Highlight conservation practices, and SWCD partnerships. Guide connections to the 'real world' science practices and new technologies.

FUNDING

Collaborative grants with community partners, community outreach and fundraising efforts, develop shared value statements for potential local donors, and continue to expand our Outdoor School partners



OUTDOOR SCHOOL FOR ALL 5TH & 6TH GRADE STUDENTS

OUTDOOR SCHOOL IS A 3-6 DAY EXPERIENCE FUNDED BY MEASURE 99

THERE IS AN EXTENSIVE OUTDOOR SCHOOL NETWORK SUPPORTING THIS INITIATIVE

OUTDOOR SCHOOL HAS THE POTENTIAL TO BE TRANSFORMATIVE FOR YOUTH

MANY INLAND SCHOOLS WANT TO COME COASTAL- LIMITED OPTIONS

MOVING FORWARD: INTEGRATED LEARNING

We will continue to work closely with schools, offering field trips and on-site garden education sequenced with NGSS standards.



INSPIRE YOUTH...

to be Creative, to Collaborate, to Communicate and to be Critical thinkers (and to eat turnips)!



Curry Watersheds Partnership is dedicated to protecting the county's farms, fish and forests through education, conservation, and watershed restoration practices.



SERVING CURRY YOUTH THROUGH PARTNERSHIPS SINCE 2004.

STATIA RYDER: STATIA@CURRYWATERSHEDS.ORG

CATHY BODEN: CATHY@CURRYWATERSHEDS.ORG

Join us!

Donate!